

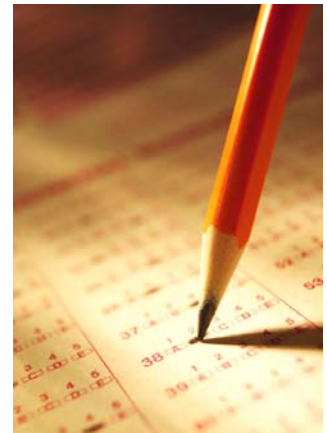


# SAT SUBJECT / AP TEST PREP

**Course Description:** Starting in March, we will be offering classes for the SAT Subject Tests in Biology, Chemistry, Math 2C, Physics, US History, and World History. Classes are open to students who are interested in taking the June SAT Subject Tests. We also offer AP tutoring for various subjects. Please contact us for course availability.

## SAT SUBJECT TEST PREP CLASS SCHEDULE START DATE: FEBRUARY 25, 2010

Subject	Day	Time
Math Level 2 ( Session A)	Friday	5:00pm - 8:00pm
Math Level 2 ( Session B)	Saturday	8:00am - 11:00am
Math Level 2 ( Session C)	Saturday	12:00pm - 3:00pm
Biology (Session A)	Saturday	8:00am - 11:00am
Biology (Session B)	Saturday	2:30pm - 5:30pm
Chemistry	Saturday	12:30pm - 3:30pm
Physics	Saturday	2:30pm - 5:30pm
U.S. History (Session A)	Thursday	5:00pm - 8:00pm
U.S. History (Session B)	Saturday	12:30pm - 3:30pm
World History	Saturday	2:30pm - 5:30pm



## AP EXAM PREP TUTORING START DATE: FEBRUARY 25, 2010



Subject	Day	Time Slots
Biology	Saturday	11:00am - 1:00pm
Chemistry	Friday	4:00pm - 6:00pm
Calculus AB/BC	Friday	4:00pm - 6:00pm
Physics	Wednesday	To be Announced
U.S. History	Thursday	4:00pm - 6:00pm
World History	Friday	4:30pm - 5:30pm

**How to Register:** Enrollment in our programs is on a first-come first-served basis. Register early to avoid the late rush and to secure a place in the appropriate class. Each student must take a free diagnostic test and meet with a director before being placed in a class. *A \$50 non-refundable registration fee is charged for first-time enrollment.*

### ⌘ Important Dates ⌘

**February 25<sup>th</sup>:** Elite Subject Test Classes Begin

**May 1<sup>st</sup>:** "AP Day" at Elite

**May 3<sup>rd</sup> to May 14<sup>th</sup>:** National AP Exam Dates

**June 5<sup>th</sup>:** National test date for SAT Reasoning and Subject Tests



### SAT Subject Test Prep Course

- \$... / 12 weeks / 1 subject
- \$... / 12 weeks / 2 subjects
- \$... / 12 weeks / 3 subjects

### AP Test Prep - Tutoring

<u>Teacher : Student</u>	<u>Cost</u>
1:1	\$.../hour
1:2	\$.../hour
1:3	\$.../hour